

Vice Fund Summary Prospectus
Trading Symbol: VICEX
July 30, 2009, as supplemented February 17, 2010



Before you invest, you may want to review the Fund's prospectus, which contains more information about the Fund and its risks. You can find the Fund's prospectus and other information about the Fund online at http://www.usamutuals.com/vicefund/inv_info.aspx. You may also obtain this information at no cost by calling 866-264-8783 or by sending an e-mail request to fundinfo@usamutuals.com. The Fund's prospectus and statement of additional information, both dated July 30, 2009, are incorporated by reference into this Summary Prospectus.

Investment Objective

The Fund's investment objective is long-term growth of capital.

Fees and Expenses of the Fund

This table describes the fees and expenses that you may pay if you buy and hold shares of the Fund.

Shareholder Fees

(fees paid directly from your investment)

Redemption Fee <i>(as a percentage of amount redeemed, if applicable)</i>	1.00%
---	-------

Annual Fund Operating Expenses

(expenses that you pay each year as a percentage of the value of your investment)

Management Fees	0.95%
Distribution (12b-1) Fees	0.25%
Other Expenses	
Dividends on Short Sales and Interest Expense	0.13%
Remainder of Other Expenses	0.54%
Total Annual Fund Operating Expenses	1.87%
Add: Expense Recovery by Advisor	0.01%
Total Annual Fund Operating Expenses After Expense Recovery by Advisor ⁽¹⁾	1.88%

⁽¹⁾ Effective as of July 31, 2009, Mutuals Advisors, Inc. ("MAI") has contractually agreed to limit the Fund's Total Annual Fund Operating Expenses (excluding dividends on short sales and interest expense) to 1.85% of average net assets of the Fund through July 31, 2010, with such renewal terms of one year, each measured from the date of renewal, as may be approved by the Board of Trustees, unless either the Board of Trustees or MAI terminates the agreement prior to such renewal.

Example

The following Example is intended to help you compare the cost of investing in the Fund with the cost of investing in other mutual funds. The Example assumes that you invest \$10,000 in the Fund for the time periods indicated. The Example also assumes that you redeem all of your shares at the end of those periods, and that your investment has a 5% return each year and that the Fund's operating expenses remain the same. The Example also assumes that your dividends and distributions have been reinvested. Although your actual costs may be higher or lower, based on these assumptions your costs would be:

1 Year	3 Years	5 Years	10 Years
\$188	\$582	\$1,001	\$2,169

Portfolio Turnover

The Fund pays transaction costs, such as commissions, when it buys and sells securities (or “turns over” its portfolio). A higher portfolio turnover rate may indicate higher transaction costs and may result in higher taxes when Fund shares are held in a taxable account. These costs, which are not reflected in annual fund operating expenses or in the example, affect the Fund’s performance. During the most recent fiscal year, the Fund’s portfolio turnover rate was 26.67% of the average value of its portfolio.

Principal Investment Strategies

The Fund, a non-diversified investment company, invests primarily in equity securities (i.e., common stocks, preferred stocks and securities convertible into common stocks) of small, medium and large capitalization companies, which include U.S. issuers and foreign issuers, including those whose securities are traded in foreign jurisdictions as well as American Depositary Receipts (“ADRs”).

Under normal market conditions, the Fund will invest at least 80% of its net assets in equity securities of companies that derive a significant portion of their revenues from alcoholic beverages, tobacco, gaming and defense/aerospace. The Fund may, from time to time, have greater than 25%, but no more than 80%, of its net assets concentrated in one of these industries. While the Fund may concentrate its investments in one of these industries, it is likely that the particular industries or sectors most attractive to the Fund may, and likely will, change over time. Note, however, that when market conditions are unfavorable for profitable investing or when suitable investments are not otherwise available, the Fund may from time to time invest any amount in cash or high-quality short-term securities as a temporary defensive position.

The Fund will also participate in other strategies in an attempt to generate incremental returns, including short selling of securities and certain options strategies. Use of these strategies may vary depending upon market and other conditions, and may be limited by regulatory and other constraints to which the Fund is subject.

For cash management purposes, the Fund may hold up to 20% of its net assets in cash or similar short-term, high-quality debt securities. These short-term debt securities and money market instruments include commercial paper, certificates of deposit, bankers’ acceptances, shares of money market mutual funds, U.S. Government securities and repurchase agreements.

Principal Risks

The risks associated with an investment in the Vice Fund can increase during times of significant market volatility. The principal risks of the Vice Fund include:

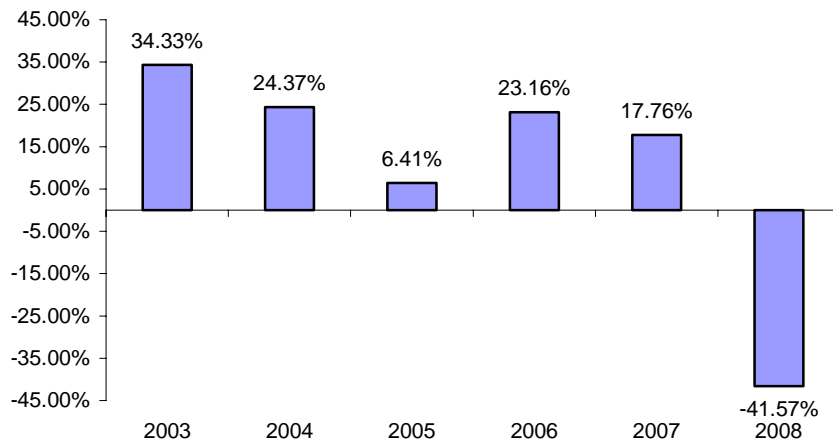
- the risk that you could lose all or portion of your investment in the Fund;
- the risk that certain stocks selected for the Fund’s portfolio may decline in value more than the overall stock market;
- the risk that investment strategies employed by the adviser in selecting investments for the Fund may not result in an increase in the value of your investment or in overall performance equal to other investments;
- the risk that asset allocation to a particular strategy does not reflect actual market movement or the effect of economic conditions;
- because the Fund is non-diversified (meaning that compared to diversified mutual funds, the Fund may invest a greater percentage of its assets in a particular issuer), its shares may be more susceptible to adverse changes in the value of a particular security than would be the shares of a diversified mutual fund;
- because the Fund may invest up to 80% of its net assets in one industry or sector, the Fund may be subject to the risks affecting that one sector or industry, including the risk that the securities of companies within that one sector or industry will underperform due to adverse economic conditions, regulatory or legislative changes or increased competition affecting the sector or industry, more than would a fund that invests in a wide variety of market sectors or industries;

- the risk of investing in small- to mid-capitalization companies whose performance can be more volatile and who face greater risk of business failure, which could increase the volatility of the Fund's portfolio;
- the risk that the Fund may have difficulty selling small- to mid-capitalization securities during a down market due to lower liquidity;
- the risk that political, social or economic instability in foreign developed markets may cause the value of the Fund's investments in foreign securities to decline;
- currency-rate fluctuations due to political, social or economic instability may cause the value of the Fund's investments to decline;
- the risk of investing in a wide range of derivatives, including call and put options, futures and forward contracts, for hedging purposes as well as direct investment; and
- the risk of loss if the value of a security sold short increases prior to the scheduled delivery date, since the Fund must pay more for the security than it has received from the purchaser in the short sale.

Performance

The annual returns bar chart demonstrates the risks of investing in the Vice Fund by showing changes in the Fund's performance through December 31, 2008. The Average Annual Total Returns table also demonstrates these risks by showing how the Fund's average annual returns compare with those of a broad measure of market performance. The information shown assumes reinvestment of dividends and distributions. Remember, the Fund's past performance, before and after taxes, is not necessarily an indication of how the Fund will perform in the future.

Vice Fund
Calendar Year Returns as of 12/31/08



The Fund's calendar year-to-date return as of June 30, 2009 was 1.36%. During the period shown in the bar chart, the best performance for a quarter was 21.72% (for the quarter ended June 30, 2003). The worst performance was -20.12% (for the quarter ended December 31, 2008).

Average Annual Total Returns

(For the periods ended December 31, 2008)

	One Year	Five Year	Since Inception on 08/30/2002
Vice Fund			
Return Before Taxes	-41.57%	2.32%	5.64%
Return After Taxes on Distributions ⁽¹⁾	-41.64%	2.09%	5.45%
Return After Taxes on Distributions and Sale of Fund Shares ⁽¹⁾⁽²⁾	-26.93%	2.06%	4.96%
S&P 500 Index	-37.00%	-2.19%	1.71%

⁽¹⁾ After tax returns are calculated using the historical highest individual federal marginal income tax rates in effect and do not reflect the impact of state and local taxes. Actual after-tax returns depend on your tax situation and may differ from those shown, and after-tax returns shown are not relevant to investors who hold their shares through tax-deferred arrangements such as 401(k) plans or IRAs.

⁽²⁾ In certain cases, the figure representing "Return After Taxes on Distributions and Sale of Fund Shares" may be higher than the other return figures for the same period. A higher after tax return results when a capital loss occurs upon redemption and provides an assumed tax deduction that benefits the investor.

Investment Advisor

Mutuals Advisors, Inc. ("MAI") is the Fund's investment advisor.

Portfolio Manager

Mr. Jeff Middleswart, Chief Investment Manager of the Advisor, has managed the Fund since February 9, 2010.

Purchase and Sale of Fund Shares

You may conduct transactions by mail (USA Mutuals, c/o U.S. Bancorp Fund Services, LLC, 615 East Michigan Street, 3rd Floor, Milwaukee, WI 53201-0701), or by telephone at 1-866-264-8783. Redemptions by telephone are only permitted upon previously receiving appropriate authorization. Transactions will only occur on days the New York Stock Exchange is open. To purchase or redeem shares of the Fund, investors must submit their request in good order to the Fund by 4:00 p.m. Eastern time to receive the net asset value ("NAV") calculated on that day. "Good order" means your purchase request includes: the name of the Fund you are investing in; the dollar amount of shares to be purchased; a purchase application or investment stub; and a check payable to "USA Mutuals Funds." If a request in good order is received after 4:00 p.m. Eastern time, it will be processed the next business day. Investors who wish to purchase or redeem Fund shares through a financial intermediary should contact the financial intermediary directly for information relative to the purchase or sale of Fund shares. The minimum initial amount of investment in the Fund and exchanges into the Fund from another fund in the USA MUTUALS Trust is \$1,000 for retirement accounts and \$2,000 for other types of accounts. Subsequent investments in the Fund for all types of accounts may be made with a minimum investment of \$100.

Tax Information

The Fund's distributions are taxable, and will be taxed as ordinary income or capital gains, unless you are investing through a tax-deferred arrangement, such as a 401(k) plan or an individual retirement account. Such tax-deferred arrangements may be taxed later upon withdrawal of monies from those arrangements.

Payments to Broker-Dealers and Other Financial Intermediaries

If you purchase Fund shares through a broker-dealer or other financial intermediary (such as a bank), the Fund and its related companies may pay the intermediary for the sale of Fund shares and related services. These payments may create conflicts of interest by influencing the broker-dealer or other intermediary and your salesperson to recommend the Fund over another investment. Ask your advisor or visit your financial intermediary's website for more information.